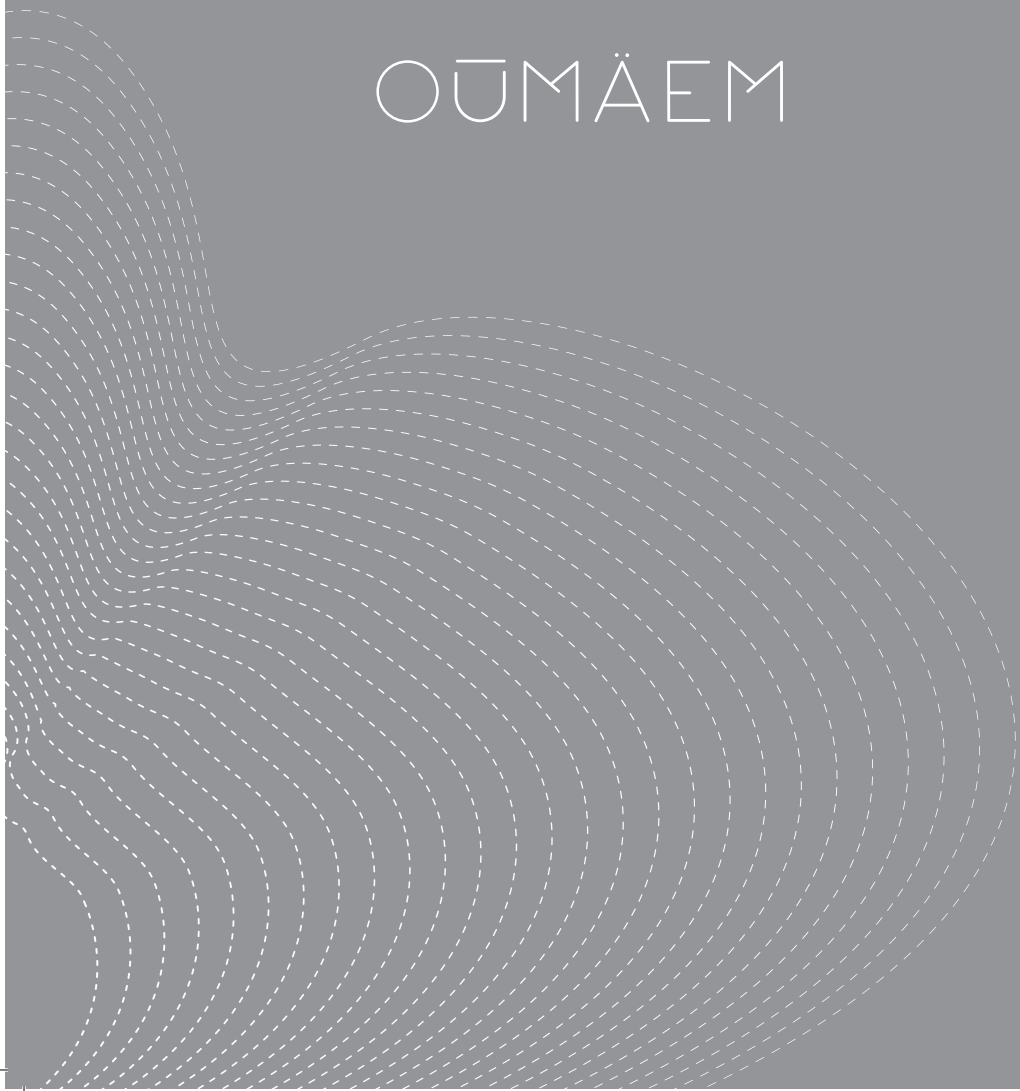


OUMÄEM



THE WORD OŪMĀEM IS A TRANSLITERATION OF  
THE ARABIC WORD **والم** THAT MEANS ABUNDANCE OF WEALTH,  
COMPLETE OR FULL FORM, A CONGREGATION OF MANY PEOPLE,  
OR AN AGGREGATION OF THINGS.

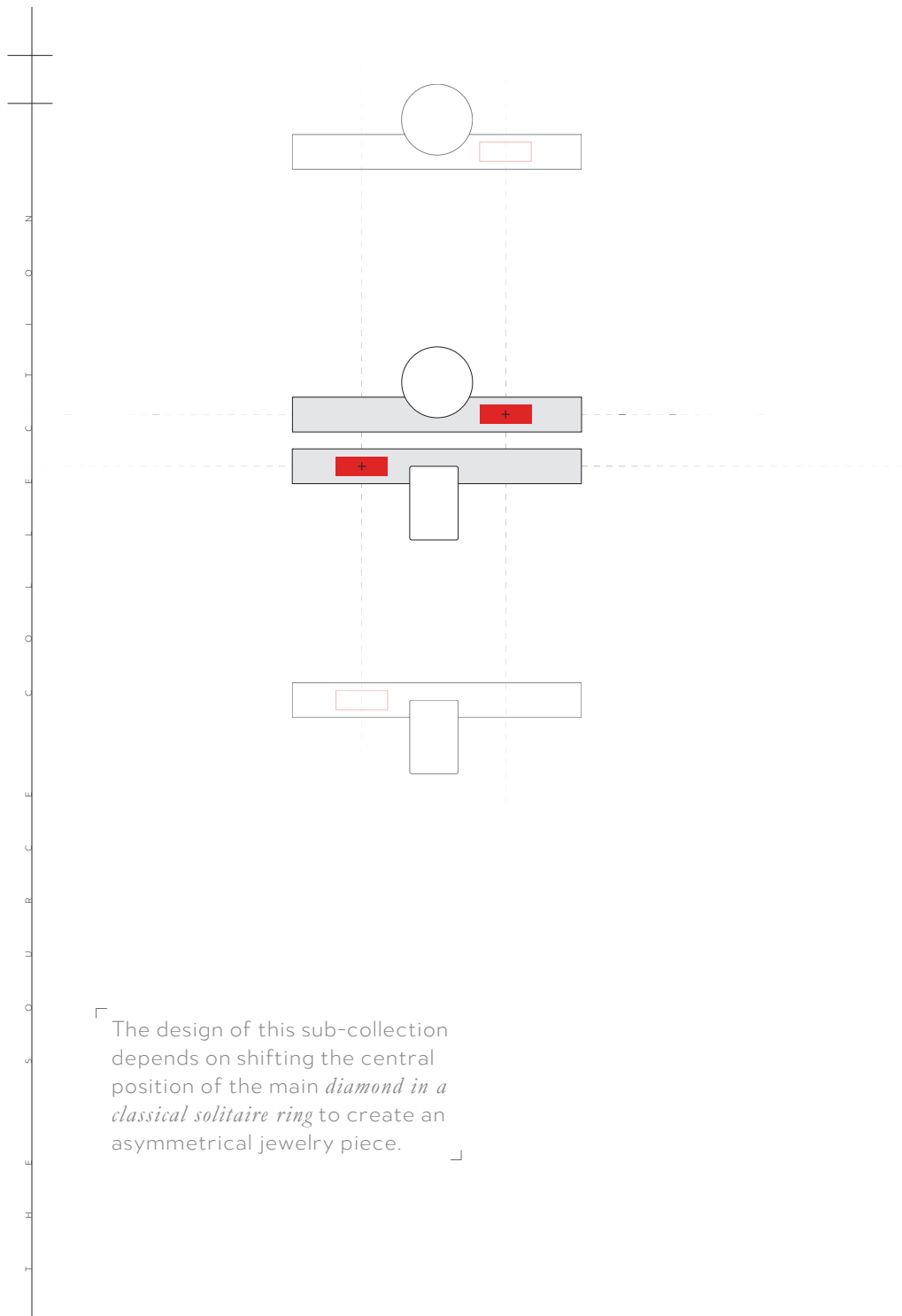
The jewelry line is about bringing various objects together in  
an organized composition. This particular collection is called  
*Source*. Al-Khwarizmi, the father of algorithms and algebra, used  
mathematical methods in order to visualize the laws of creation  
during the IX century.

The science he followed allows us to create balanced forms.

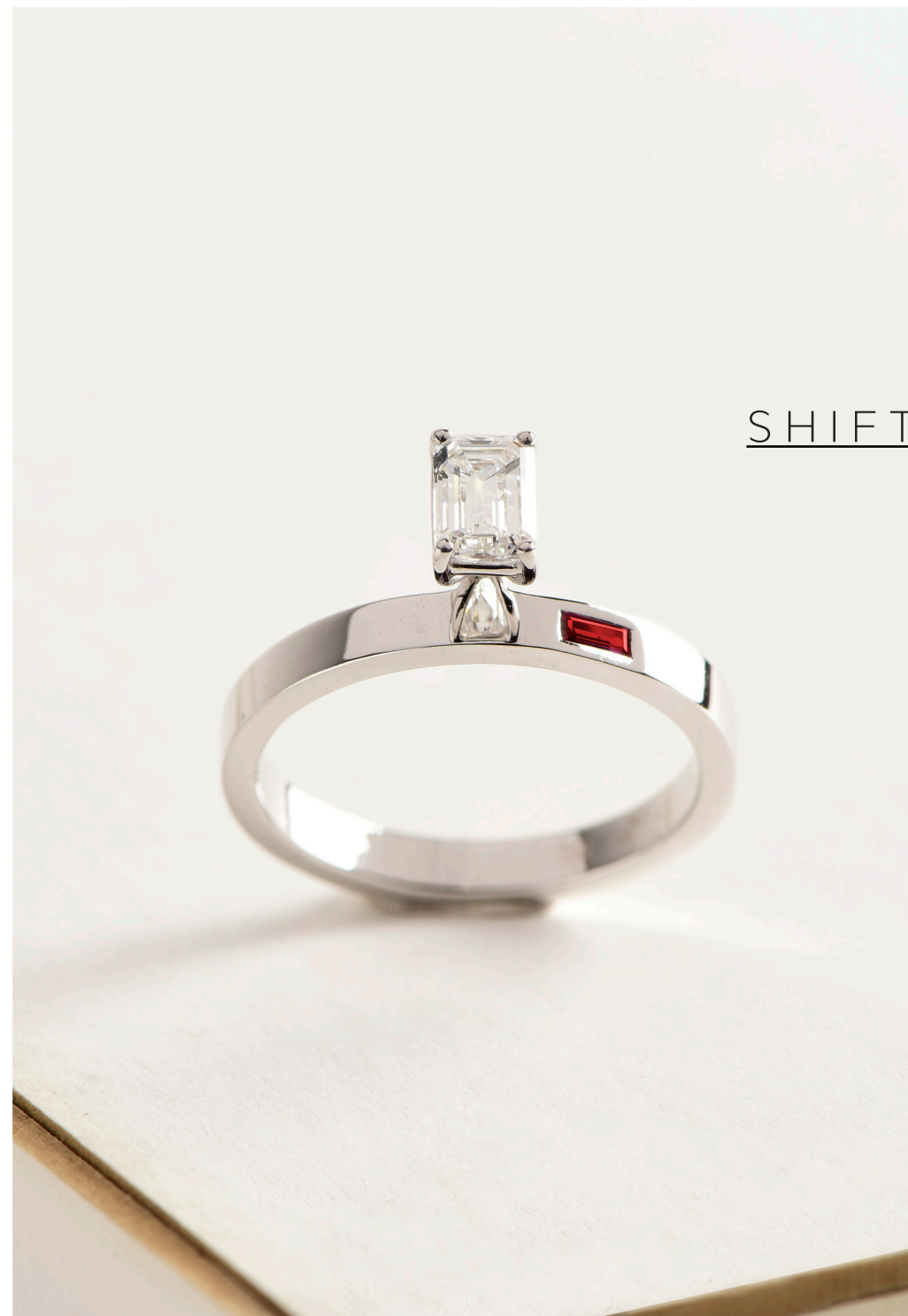
---

WE INITIALLY CONCEIVED THE PIECES IN THIS COLLECTION AS A  
CONTEMPORARY PLAY ON THE CLASSIC SOLITAIRE RING.

Taking the idea one step further, we crafted each design by  
using a coordinate system as a template to construct and break  
specific grids for each piece. The focus of each design begins  
with a single diamond shifted off-center. A single baguette-cut  
ruby is always included to tip the balance of the design. The  
ruby is not a depiction of a brand; rather, it is used as a guide on  
how to wear the pieces and to further emphasize the concept  
of decentralization and alternative standards of beauty.

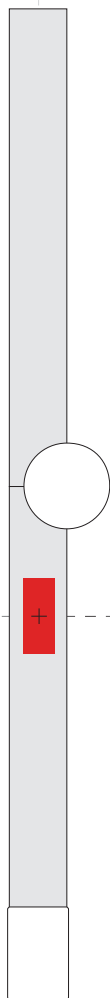


「 The design of this sub-collection depends on shifting the central position of the main *diamond in a classical solitaire ring* to create an asymmetrical jewelry piece. 」



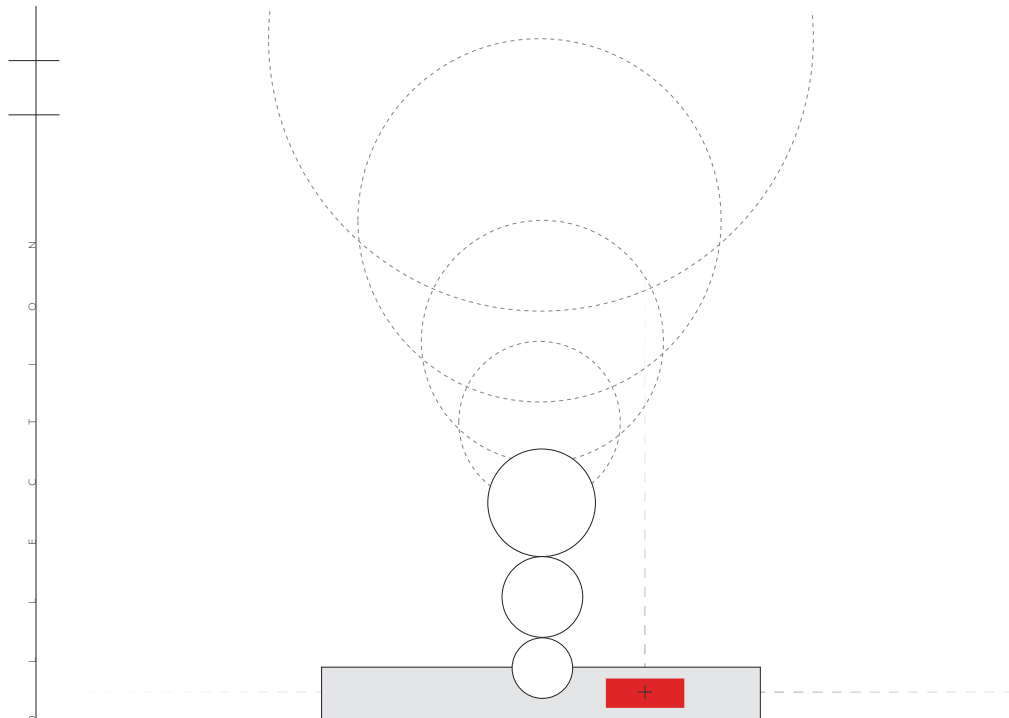
「**The abstract and minimal qualities in this sub-collection highlight its gender-fluid characteristics.**

*Simple yet bold*, the pieces are designed with a single *flawlessly cut diamond* of modest size, which allows them to be the unisex group in this collection. 」



SILENT

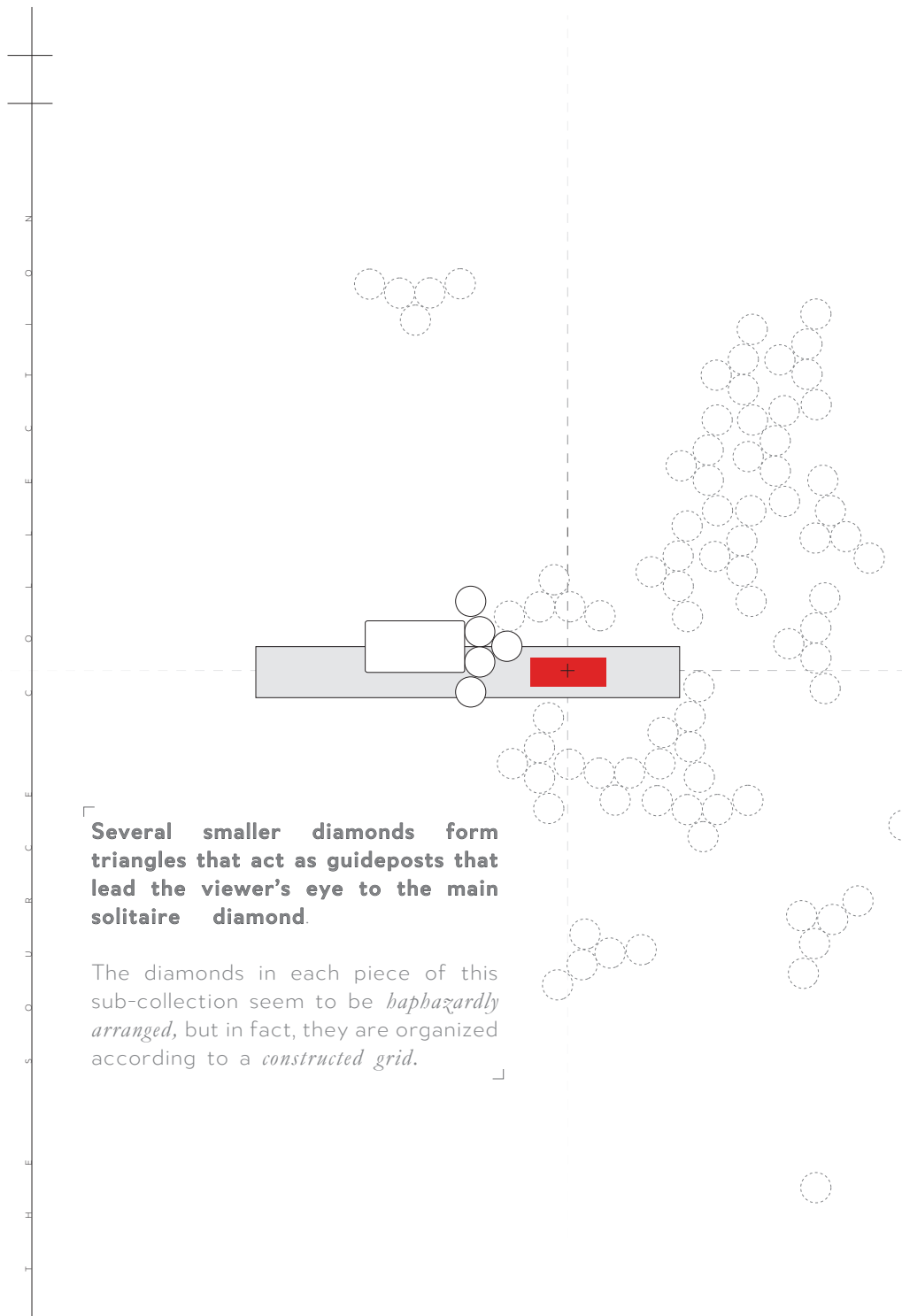




**This 3-diamonds ring is a modern twist on the classic solitaire ring with two side diamonds.**

Here, the main stone is complemented by the addition of smaller stones that create a powerful linear composition. The *brilliance* casts an endless *ripple* effect.

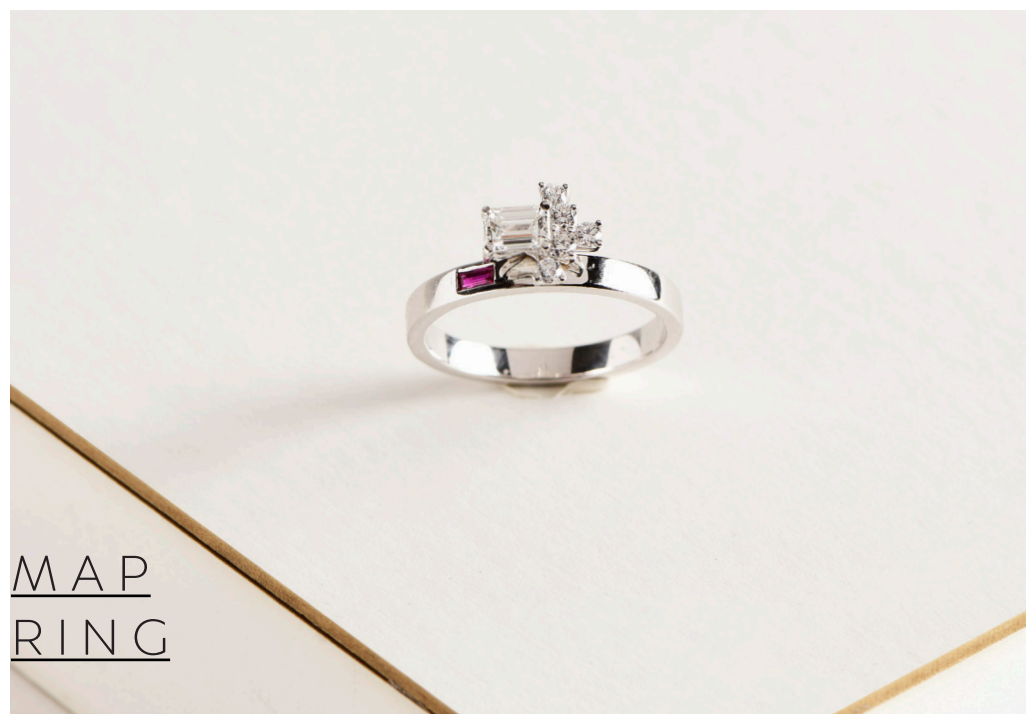




MAP



MAP  
STUD  
EARRINGS



MAP  
RING



MAP  
EARRING

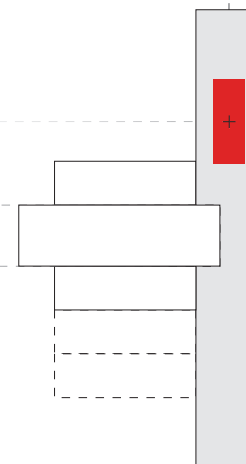


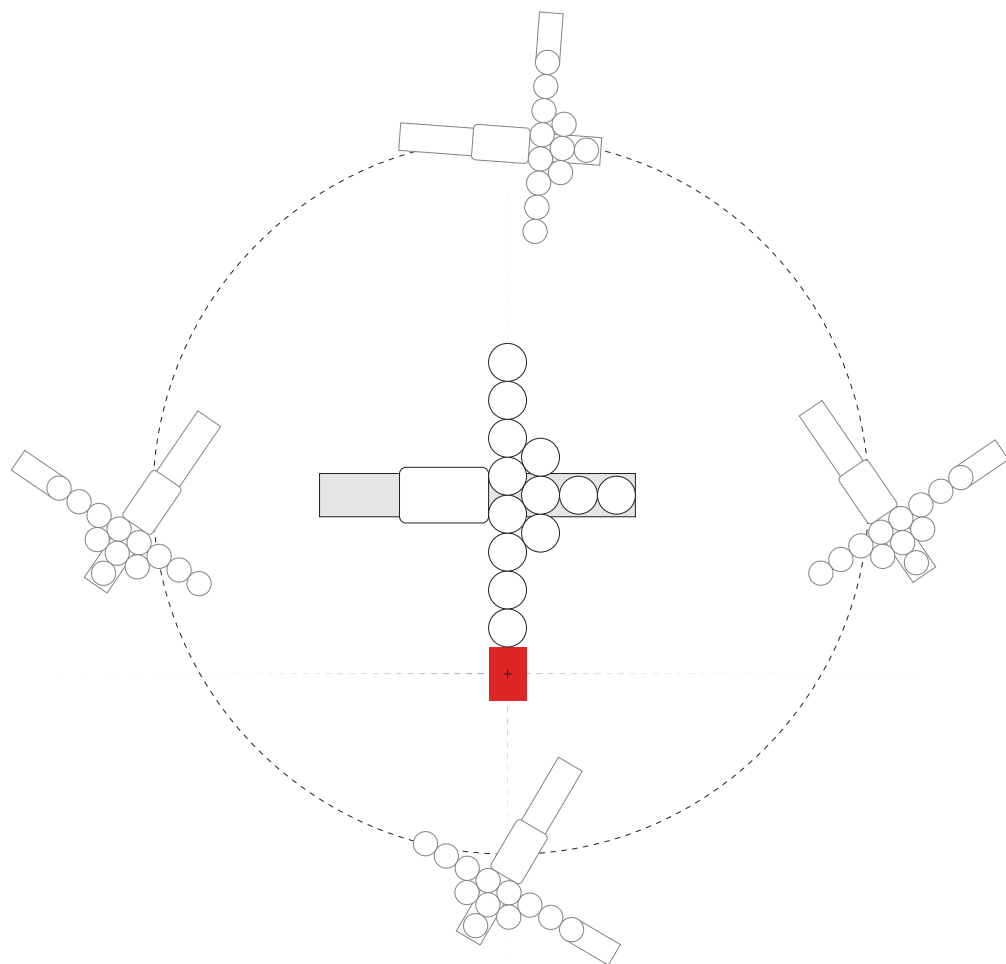
## INDEX



「 This ring is the only piece that used a baguette cut as the main stone. 」

The overall diamond composition comprises three baguettes. The central baguette is longer and *points inward*, toward the person's inner power.





The orbital movement of planets that follows a larger order inspired the design of this ring. The diamonds are organized in an orthogonal way with a radial arrangement in the middle.

This is the *only ring where the ruby is positioned as part of the main diamond cluster*; its original place is now occupied with a simple brilliant diamond.



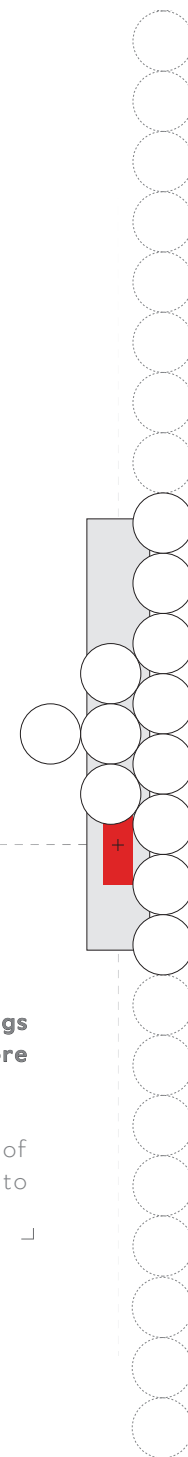
SATELLITE

M A R G I N



「Margin belongs to a group of rings created to allow the stacking of more than two rings.

The design is simple: a number of brilliant-cut diamonds arranged to form a straight line – *an edge*.」





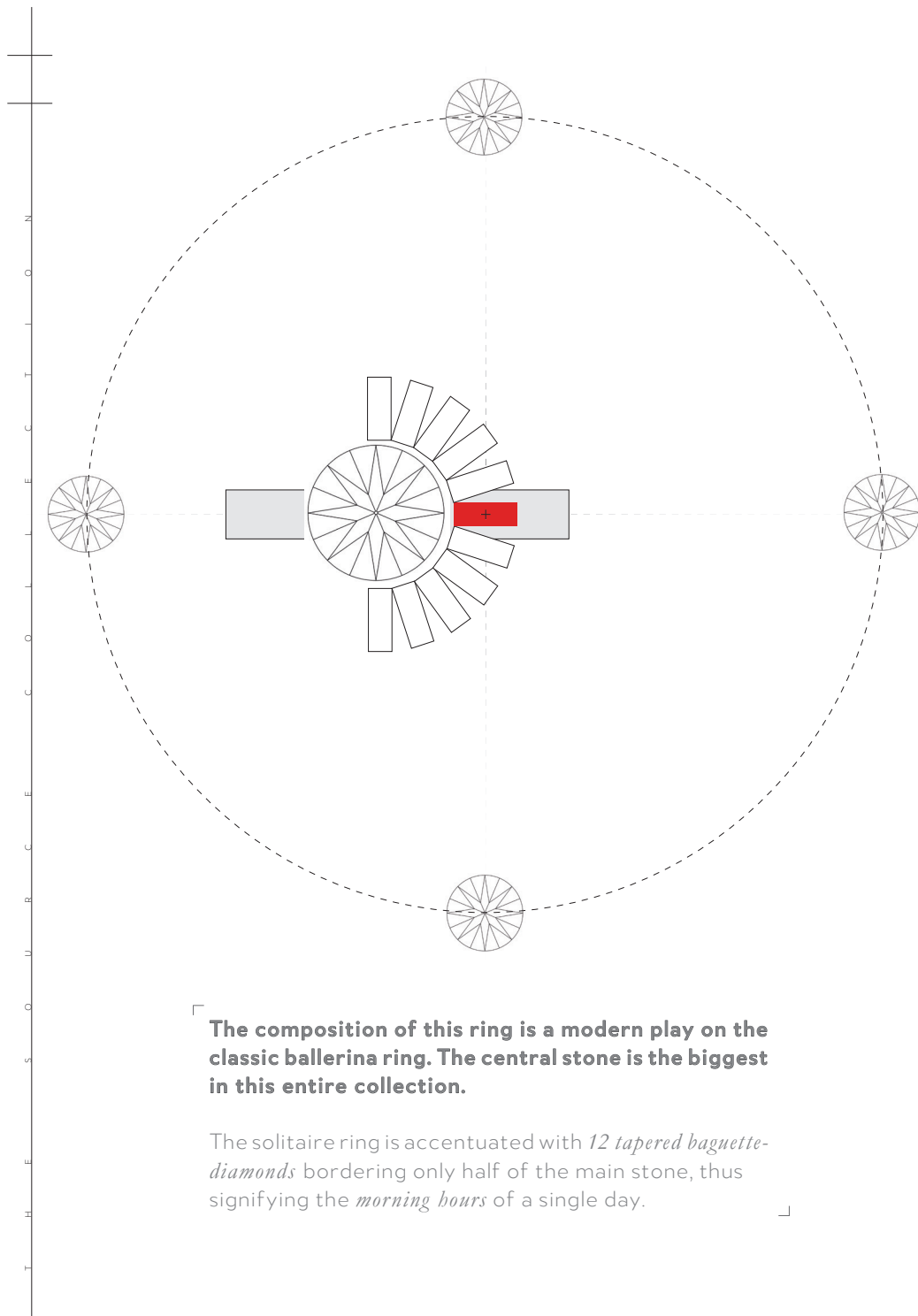
Baguettes and round brilliant-cut diamonds are organized as if they were captured *mid-eruption* around a central emerald-cut diamond.

The necklace is designed with special *micro hinges* allowing the diamonds to fit perfectly on any chest size.

A *ruby baguette* is placed within on left side of the necklace, situated *right above the heart*.

This necklace symbolizes the subtle emotions of its wearer. Paradoxically, the necklace is moderately lavish.

ALT-PLUME



「 The composition of this ring is a modern play on the classic ballerina ring. The central stone is the biggest in this entire collection. 」

The solitaire ring is accentuated with *12 tapered baguette-diamonds* bordering only half of the main stone, thus signifying the *morning hours* of a single day. 」





The emerald-cut diamond is fixed in a moment of tension, half is embedded in the shank of the ring and the other half extends outwards grabbing the attention of its viewer.

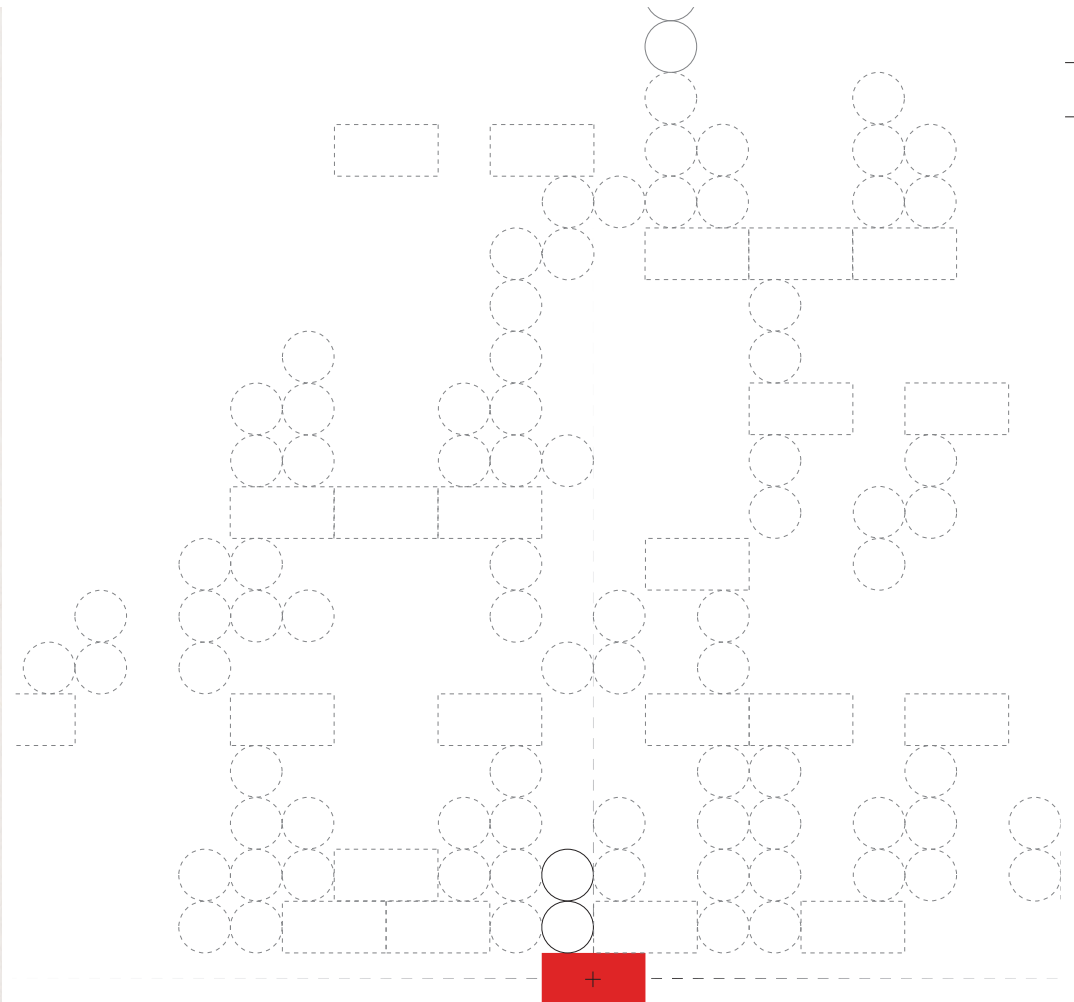
Although the solitaire diamond appears as if it is placed in a *tension* setting, it is conventionally set on four prongs.

The ring comes in two versions; *male* with shank width of 6mm and a *female* version in 4mm width.



(AT)TENSION

# TETRIS



「Beauty is continuously *reinventing itself*.  
The pendant in this sub-collection is  
one of the simplest jewelry pieces in  
this collection.

The design is made out of a single ruby  
baguette and two brilliant-cut diamonds.

The overall stone arrangement gives the  
impression that the object is  
*under-construction*.



ÉCU



REINE  
EARRINGS

PETITE  
CHANGEMENT



MAP  
ROUND

# STACKS

TAKING THE METHODS OF DESIGN ONE STEP FURTHER,

7 rings were manufactured in a way that allows  
for one to stack them seamlessly.

Each one of the 7 models acts as a unit in a  
universal system. Similar to the laws of  
mathematics, each ring is a variable within an equation.

When stacked together, the rings communicate  
a new statement following the same philosophy.



SHIFT

+

MARGIN

+

INDEX



ECHO

+

SHIFT

SHIFT  
+  
ECHO



MAP  
+  
ECHO



SHIFT

+

MARGIN

+

INDEX



SHIFT

+

EMERALD



INDEX

+

MARGIN



ig | [oumaem.jewelry](#)

[www.oumaem.com](#)

[info@oumaem.com](mailto:info@oumaem.com)

「 ABOUT THE DESIGNER

*Anas Alomaim* is an architect, urbanist, and a professor of architecture. Alomaim developed a passion for jewelry design during a critical moment in his career.

After the death of his father, Alomaim stepped into a new phase of his life. He awakened anew to the relationships that connect him to the women in his family. Alomaim designed and manufactured solitaire rings for his mother and sisters as a gesture of gratitude for their support during this precarious time. It was then that he realized his passion for diamonds, jewelry design, and their multifaceted beauty.

*Alomaim believes that the art of design encompasses everything* from a simple spoon to a city

After finishing his Masters of Architecture and Urban Design at Columbia University, he moved to California to pursue his PhD at the University of California Los Angeles. He worked on analyzing the geometries of structures that respect the larger laws of nature, constellation, and planets: namely, how mathematical equations translate physically on a Cartesian coordinate system into creating monumental objects. Alomaim participated and co-curated several exhibitions in Kuwait, Dubai, New York City, and Los Angeles. He also worked for academic institutions, corporate design firms, independent architectural offices, and interned with fashion designers, including Diane von Furstenberg.

Alm

i n f o @ o u m a e m . c o m

Tel: +965.996.677.81

E  
o  
u  
m  
a  
e  
m  
o  
u  
m